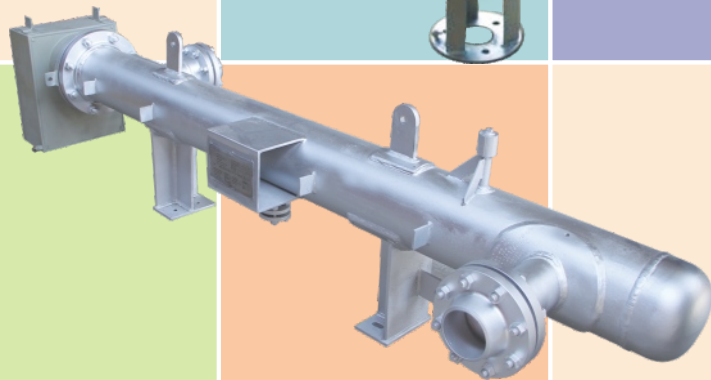
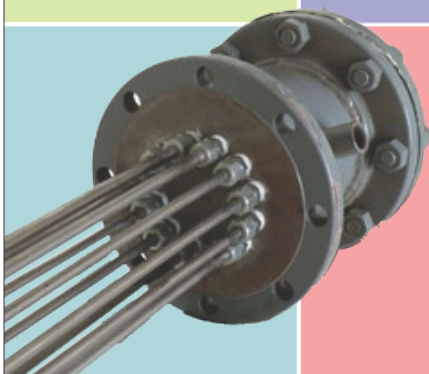
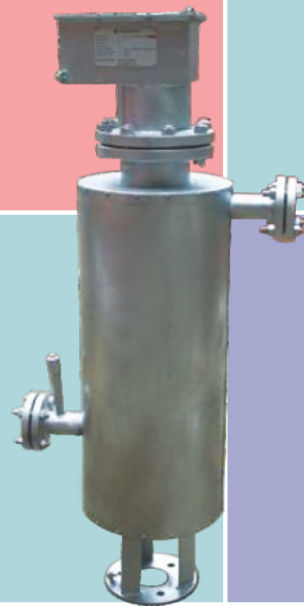
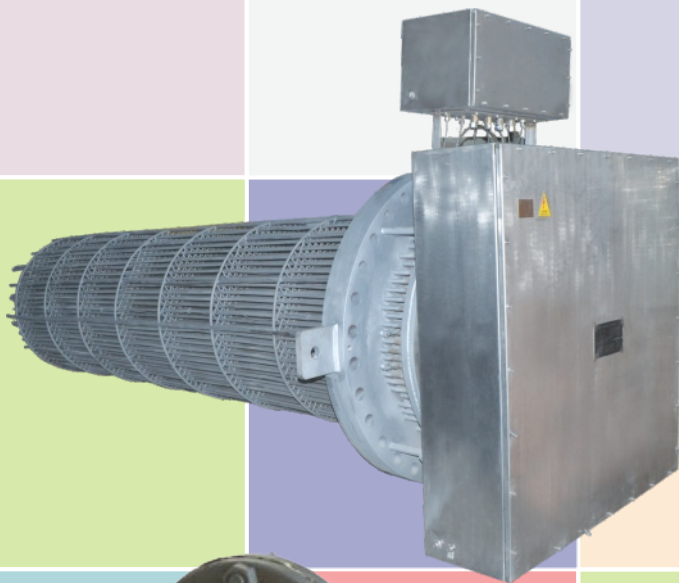
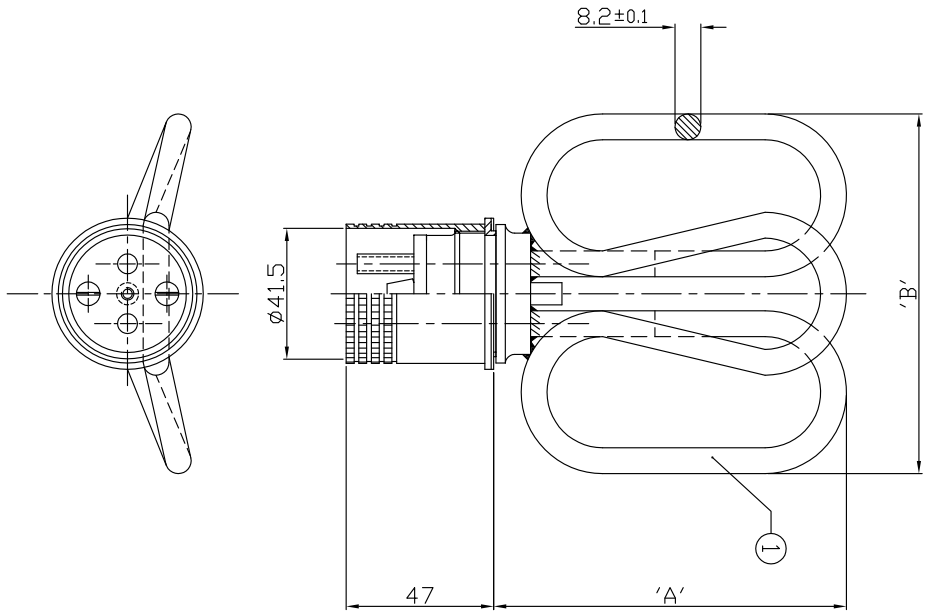


# HEATING ELEMENTS & HEATING SYSTEMS



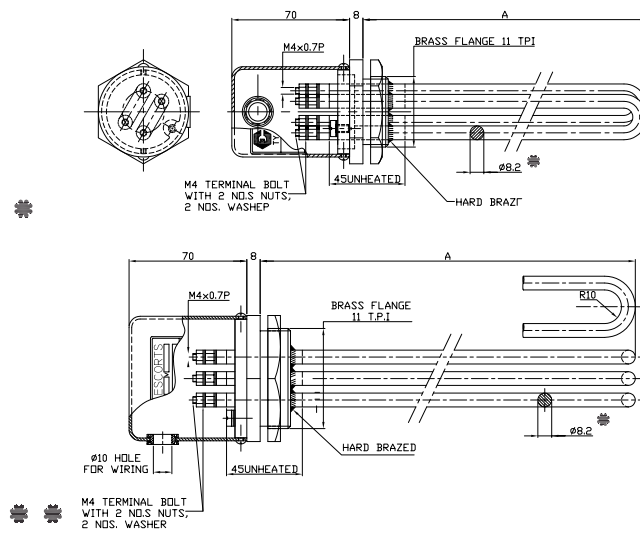
## Kettle Elements with Ejection Devices



Made out of copper tube. Element Nickel Plated with automatic ejection device for water heating - for instrument sterilizers and electric kettle.

Watts	Voltage	Depth of Immersion 'A'	Width 'B'	Flange
1000	230	112 mm	105 mm	1 <sup>9</sup> / <sub>16</sub> BSW
1500	230	112 mm	105 mm	16 TPI
2000	230	114 mm	108 mm	

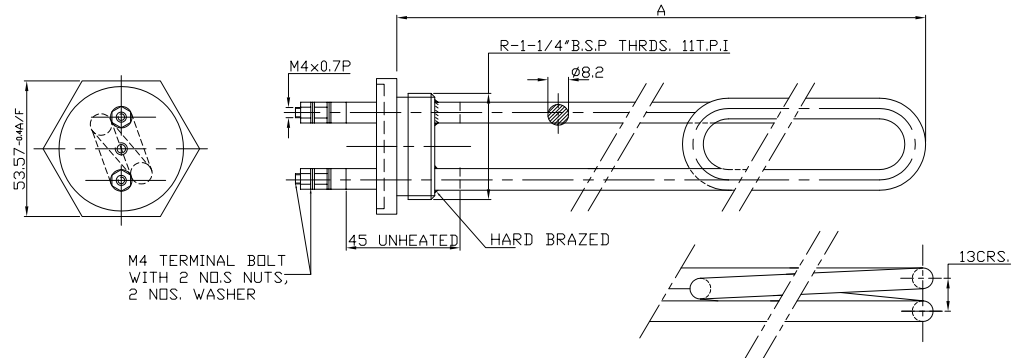
## Industrial Water Immersion Heating Elements



For Industrial hot water baths, water Jacketed apparatus, side arm circulating process tanks etc. Flexed with metallic cap for protection of terminals.

Types	Watts	Voltage	Depth of Immersion 'A'	Flange
• IHCU 20/22	2000	230	220mm	1 1/4" BSPP
• IHCUS 20/22	2000	230	220mm	1 1/2" BSPP
• IHCU 30/22	3000	230	280 mm	1 1/4" BSPP
•• IHCUS 30/22	3000	230/400(λ)	220 mm	1 1/2" BSPP
•• IHCU 40/26	4000	230/400(λ)	260 mm	2" BSPP
•• IHCU 50/32	5000	230/400(λ)	320 mm	2" BSPP
•• IHCU 60/38	6000	230/400(λ)	380 mm	2" BSPP

# Commercial Water Immersion Heating Elements

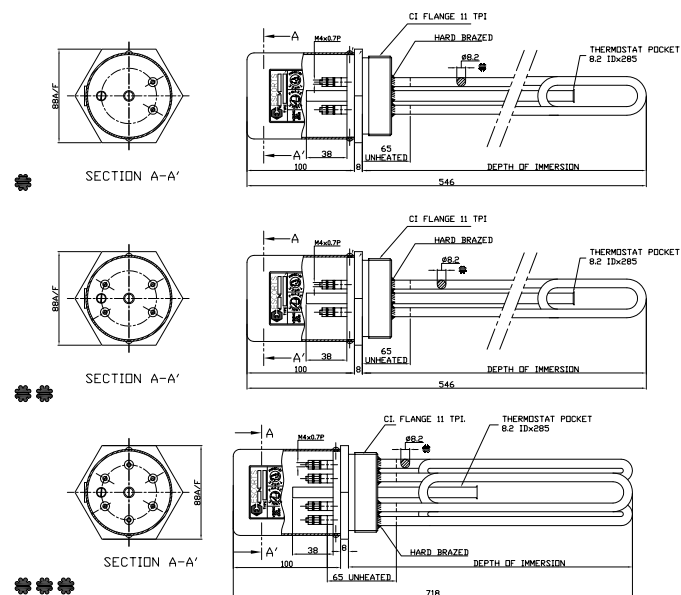


Types	Watts	Voltage	Depth of Immersion 'A'	Flange
CHCU 1.00	1000	230	220mm	1 1/4" BSPP*
CHCU 1.50	1500	230	230mm	1 1/4" BSPP*
CHCU 2.00	2000	230	325mm	1 1/4" BSPP*
CHCU 3.00	3000	230	425mm	1 1/4" BSPP

For use in geysers, boilers, sterilizers and for other commercial applications

\*Can be supplied in flange sizes of 1" or 1 1/4" BSPP also.

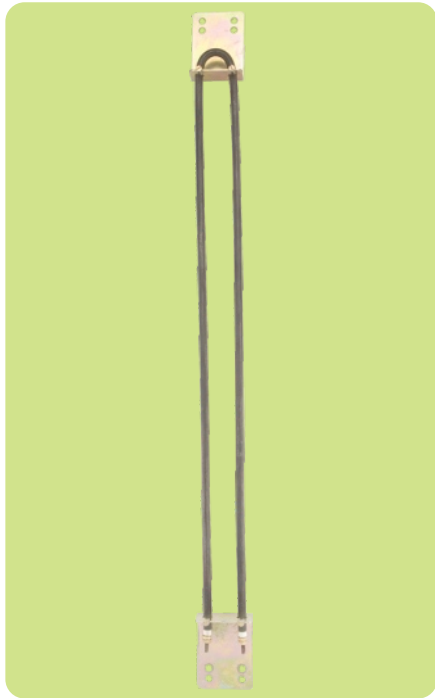
# Oil Immersion Heating Elements



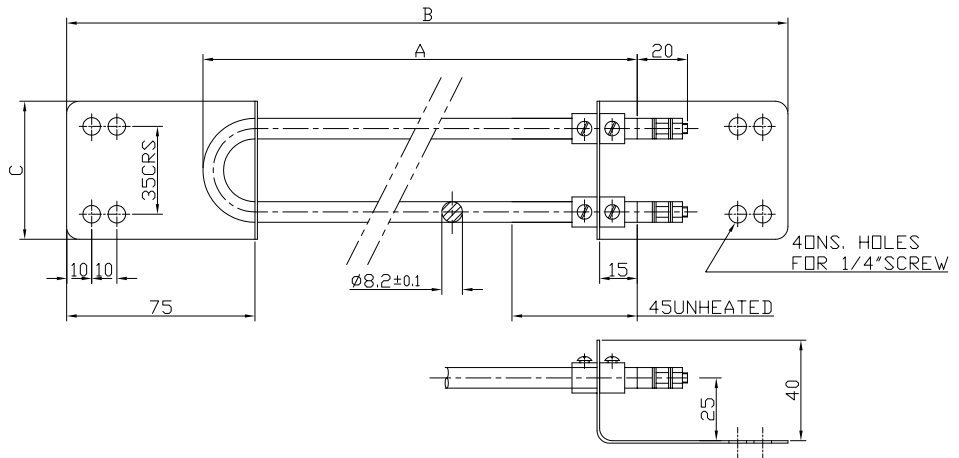
Types	Watts	Voltage	Depth of Immersion	Flange
● OHST 10/43.8	1000	230	438 mm	2 1/2 BSPP
● OHST 15/43.8	1500	230	438 mm	2 1/2 BSPP
●● OHST 20/43.8	2000	230	438 mm	2 1/2 BSPP
●●● OHST 30/43.8	3000	230 / 400(λ)	438 mm	2 1/2 BSPP
●●● OHST 40/57.5	4000	230 / 400(λ)	575 mm	2 1/2 BSPP

Made out of Steel tube for fuel oil heating, oil circulating for systems which supply hot oil to plastic process oil jacketed kettles and similar equipment. Specially designed not to carbonize oil. Provided with thermostat pocket.

## U- Tube Air Heating Elements



Made out of Chrome Nickel Steel tube used for efficient baking and curing of paints, enamels, lacquers, varnish, adhesive etc. Also used for drying of metals, powders, sands, paper, textiles etc. Specially suited to exposed and semi exposed areas.

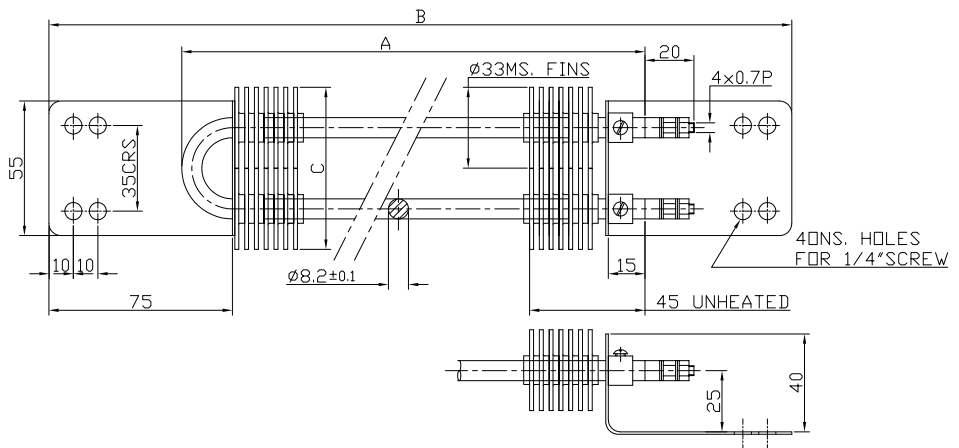


Types	Watts	Voltage	Dimensions of U Tube Air Heaters			Mounting
			'A'	'B'	'C'	
CNT 10	500	230	250 mm	365 mm	55 mm	Two adjustable brackets along with bushes
CNT 24	1000	230	610 mm	725 mm	55 mm	
CNST 30	1000	230	762 mm	877 mm	55 mm	
CNT 30	1500	230	762 mm	877 mm	55 mm	
CNST 39	1500	230	1000 mm	1115 mm	55 mm	
CNT 39	2000	230	1000 mm	1115 mm	55 mm	

## Finned Air Heating Elements

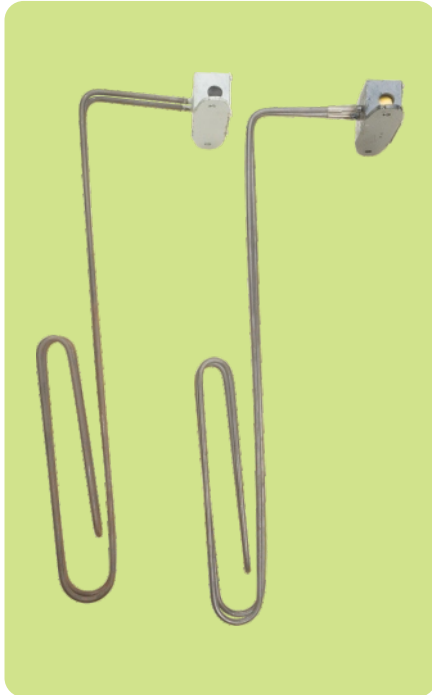


Made out of Chrome Nickel Steel tube designed for rapid and uniform heat transfer for forced convection air heating. Ideal for use in air ducts and blower types heaters. For industrial process work, requiring heated air blast for drying, heat treating annealing and for localised uniform heating of areas.

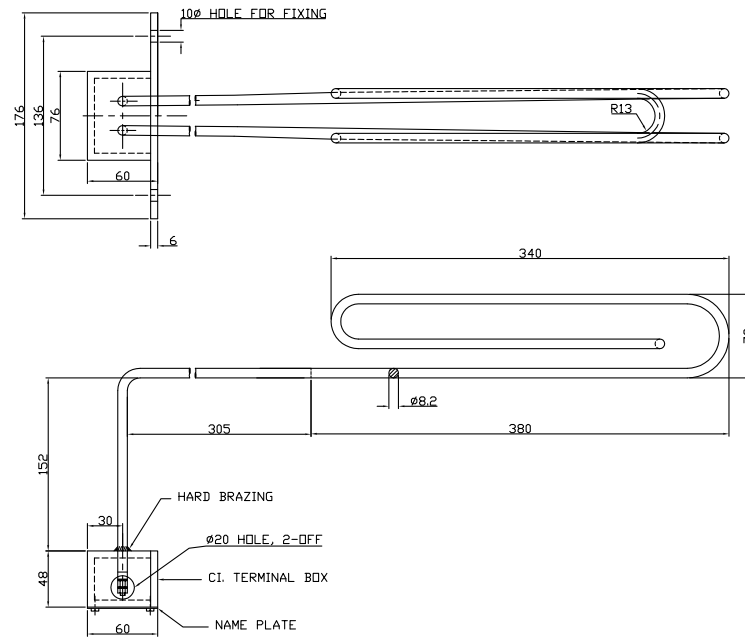


Types	Watts	Voltage	Dimensions of Finned Air Heaters			Mounting
			'A'	'B'	'C'	
CNF 10	500	230	250 mm	365 mm	70 mm	Two brackets along with bushes
CNF 24	1000	230	610 mm	725 mm	70 mm	
CNSF 30	1000	230	762 mm	877 mm	70 mm	
CNF 30	1500	230	762 mm	877 mm	70 mm	
CNSF 39	1500	230	1000 mm	1115 mm	70 mm	
CNF 39	2000	230	1000 mm	1115 mm	70 mm	

## Alkaline and Chemical Immersion Heating Elements



Alkaline heating elements made out of Chrome Nickel steel tube. Used for most alkaline cleaning solutions normally corrosive to mild-steel. Chemical heater made out of Titanium tube offers excellent corrosion resistance properties for most plating solutions. Can also be used for solutions containing Nitric, Phosphoric and chromic acids.

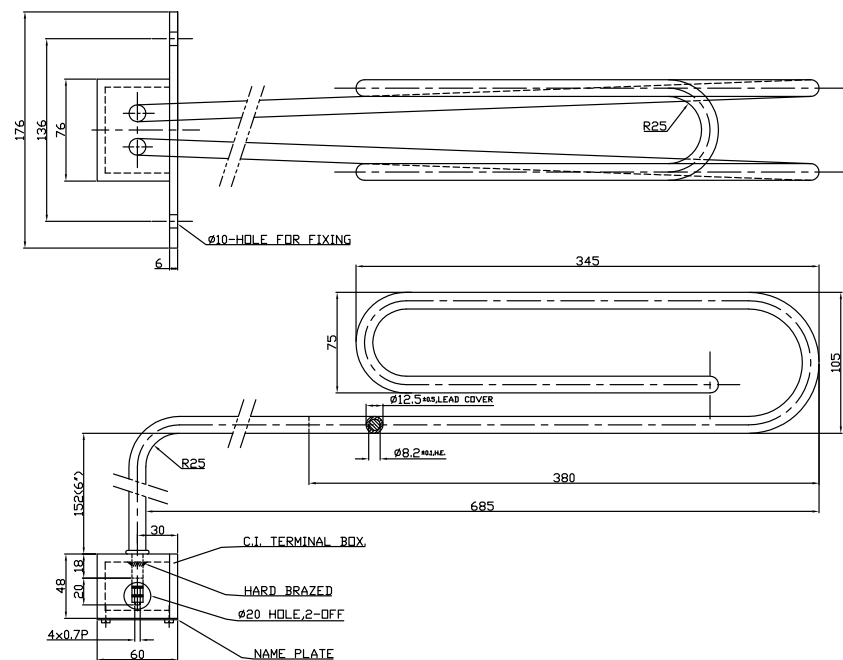


Type	Watts	Voltage	Heating Length		Total	T.Box
			Ineffective	Effective		
AKCN 30/685	3000	230	305 mm	380 mm	685 mm	176 mm
SPCA 30/685	3000	230	305 mm	380 mm	685 mm	176 mm

## Lead Covered Immersion Heating Elements

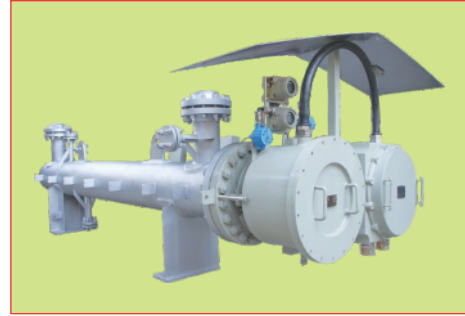
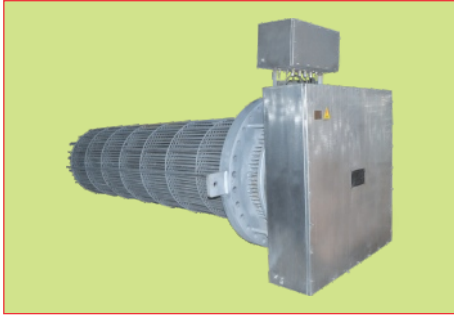
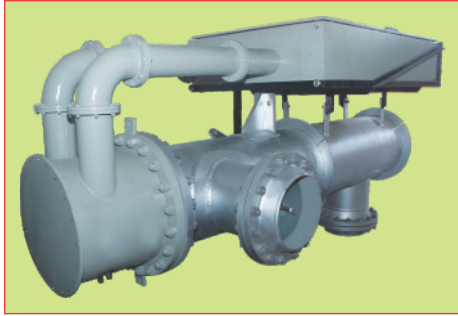


Used in Dull Nickel, Chrome and Copper plating baths. Also in pickling bath upto 10% Sulphuric acid concentration. But no other acid.



Type	Watts	Voltage	Heating Length		Total	T.Box
			Ineffective	Effective		
PBST/685	3000	230	305 mm	380 mm	685 mm	176 mm

## Custom Built Heating Units and Bundles



### Our Design

#### Thermal:

Thermal and Process Design : HTRI

#### Mechanical:

Pressure Vessels : As per ASME VIII DIV 1 or PD 5500

Flow analysis : As per TEMA

Mechanical : PV Elite

Drafting : Auto CAD

#### Electrical:

Electrical Design : As per IEC

Heating Element Resistance : In-house

### Certifications

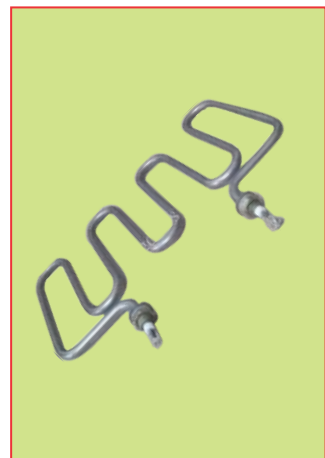
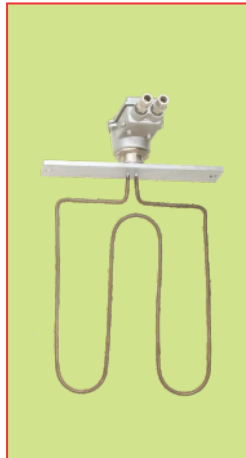
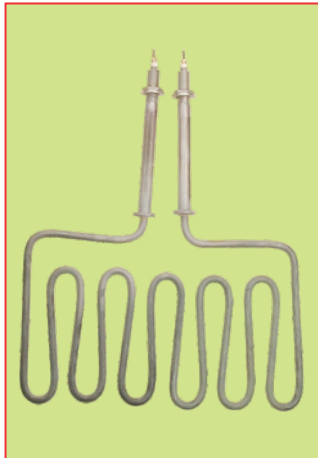
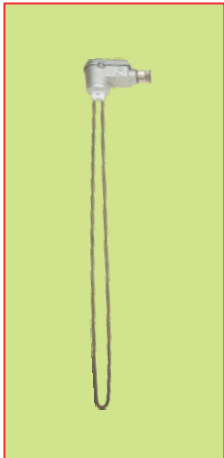
We can supply equipment as per following certifications

- Certification of Heaters for Hazardous Area : PESO / DGMS / CIMFR ATEX
- Certification of Heaters for Safe Area : CE (for Europe) GOST (for Russia)
- Pressure Equipment Directive : PED
- Indian Standard : BIS
- Quality Management : ISO 9001: 2008



ISO 9001:2008

## Custom Built Heating Elements



ISI mark on all elements except 6KW water, oil & chemical Heating elements